

Services for poorly children & young people in Trafford

In February 2010, services for poorly children and young people in Trafford will be changing. We want families in Trafford know about the changes and how they may be affected by them.

As you have contact with families in your job, we have produced this information to ensure you know about the changes.



What will the service for poorly children & young people be like from February 2010?

From 2010, children's outpatients, community services and accident emergency services at Trafford General Hospital will continue as normal. In addition, more children and young people will receive care closer to home where it is safe to do so. There will also be a new Children's Resource Centre at Trafford General that will provide a children's outpatients department and day surgery services.

However, from February 2010, there will be no overnight children's ward at Trafford General Hospital as this part of the service will transfer to Wythenshawe Hospital.

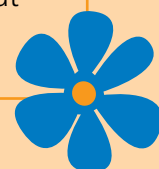
THE CHANGES AT A GLANCE

What services will remain?

- ✿ Children's Community Team
- ✿ Children's outpatients at Trafford General Hospital
- ✿ Accident & Emergency service for children at Trafford General Hospital
- ✿ Day surgery (for some specialties) at Trafford General Hospital

What will be different?

- ✿ Expanded Children's Community Team
- ✿ New Children's Resource Centre at Trafford General Hospital, including children's outpatient department
- ✿ New Children's Observation & Assessment Unit at Trafford General Hospital
- ✿ Planned general surgery operations at the new Royal Manchester Children's Hospital in central Manchester
- ✿ No overnight children's ward at Trafford General Hospital
- ✿ Overnight service for Trafford children at Wythenshawe Hospital



Why are services for **poorly children & young people** changing?

Children's (and maternity) services are changing as part of 'Making it Better' – a massive programme of investment to improve services for children, young people, women and babies in Greater Manchester. The changes will concentrate specialist skills and expertise in fewer, larger children's units in Greater Manchester to make services safer and improve staffing levels. For more information about Making it Better, go to www.bestforhealth.nhs.uk

How will families know about the changes?

We want to make sure that all Trafford families know about the changes to children's services and how they may be affected.

NHS Trafford, Trafford Healthcare NHS Trust and Trafford Children and Young People Services (CYPS) are working together to communicate the changes to Trafford families.

We hope that NHS and Local Authority staff working in Trafford will help get these important messages to families.



KEY MESSAGES FOR TRAFFORD FAMILIES

- The changes will improve services for children and young people making them safer and to meet the health care needs of children and young people into the future.
- Services will be provided locally within Trafford when it is safe to do so.
- Some services will be centralised in bigger units to concentrate specialist skills and expertise and increase staffing levels. These are factors that lead to safer health services.
- Daytime children's services including outpatients and day surgery will continue to be provided at Trafford General Hospital.
- Poorly children and young people will be cared for at home wherever it is safe to do so. The Trafford Children's Community Team provide this service and the team has been expanded so that the nurses can keep more children out of hospital or get them home sooner if they do need to be admitted.
- The accident and emergency department at Trafford General Hospital will continue to treat children who need emergency care.
- The new 'Treasure Island Children's Unit' within the accident & emergency unit at Trafford General Hospital will assess and observe children for up to six hours. After that time most children will be well enough to go home, with the community children's team giving extra care at home if needed.
- The small number of children who do need to stay in hospital longer than six hours will be admitted to Trafford General Hospital or, from February 2010, transferred to Wythenshawe Hospital.

Please help us to get these messages to Trafford families.

FURTHER INFORMATION

If you would like more information about the changes to Trafford, please go to: www.trafford.nhs.uk

Or contact the Making it Better team at mib@northwest.nhs.uk or phone **0161 237 2421**.